

DESMI Group

Wholly owned companies unless otherwise stated

Shareholders:

OEP - One Equity Partner (75%)
ManCo ApS (25%)

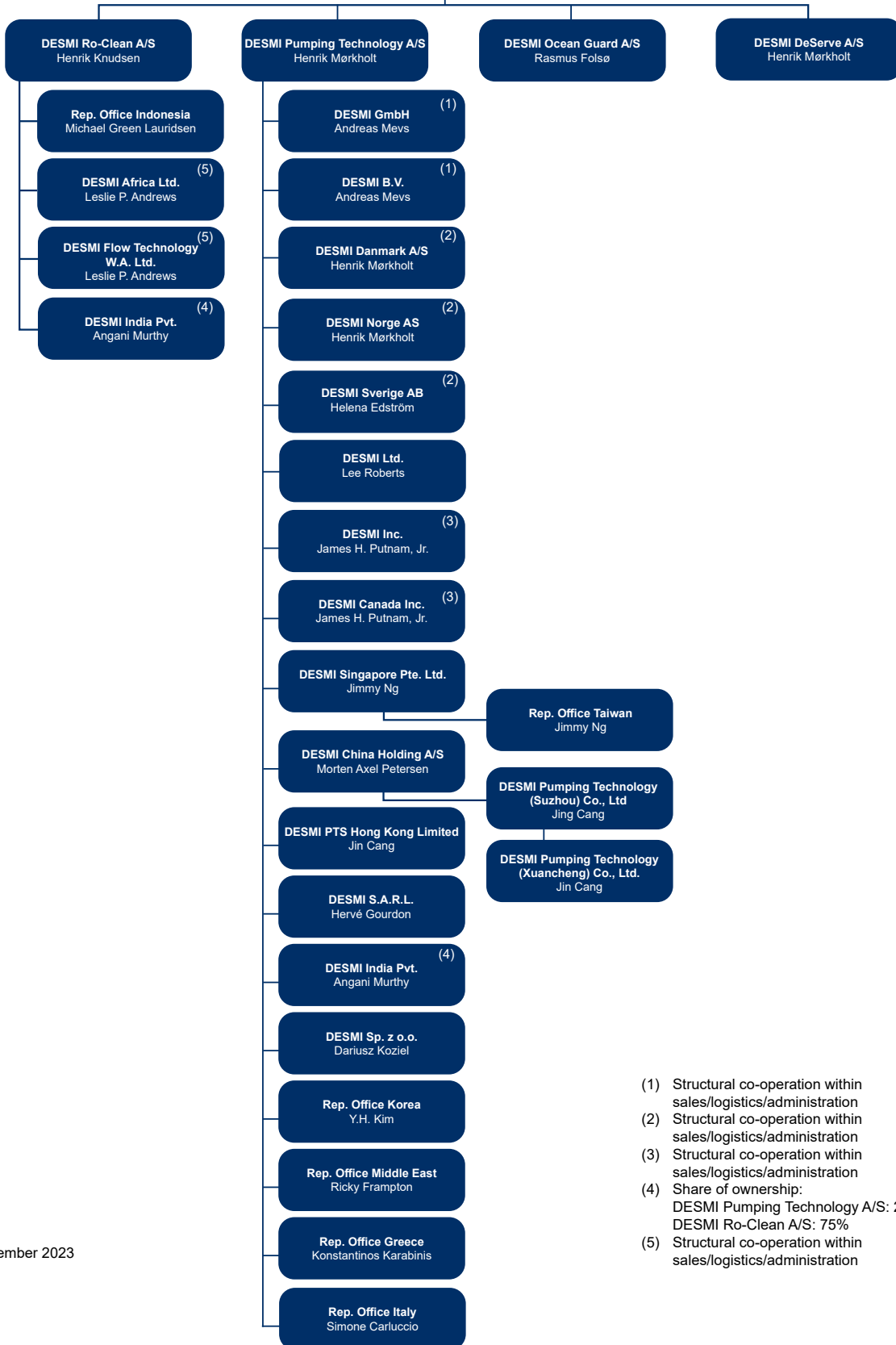
Flow Danish TopCo ApS
Humphrey Lau

Flow Danish MidCo ApS
Humphrey Lau

Danish BidCo ApS
Humphrey Lau

DESMI A/S
Humphrey Lau

Board of Directors:
Niels Erik Olsen (Chairman)
Humphrey Lau
Morten Axel Petersen



- (1) Structural co-operation within sales/logistics/administration
- (2) Structural co-operation within sales/logistics/administration
- (3) Structural co-operation within sales/logistics/administration
- (4) Share of ownership:
DESMI Pumping Technology A/S: 25%
DESMI Ro-Clean A/S: 75%
- (5) Structural co-operation within sales/logistics/administration